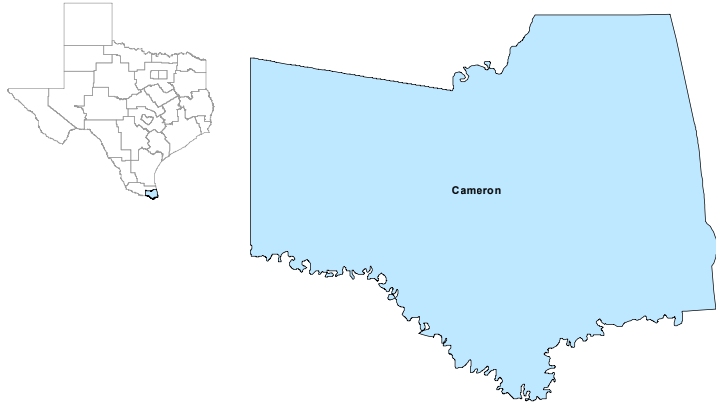


Cameron County Workforce Development Area

April 2021



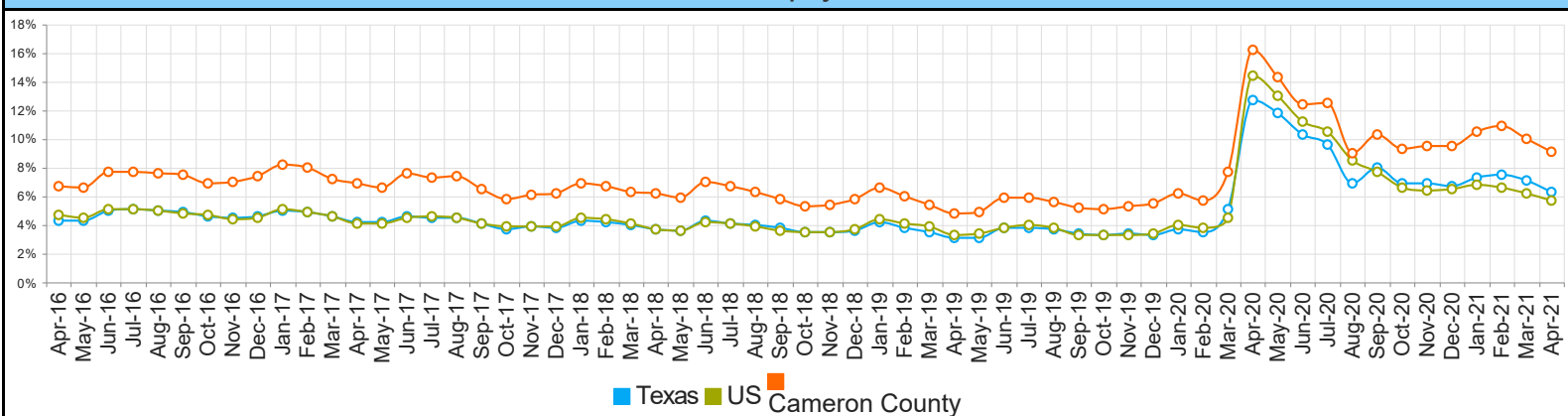
WDA Labor Force Statistics				
	Apr-21	Mar-21	Apr-20	Yearly Change
Civilian Labor Force	169,777	170,871	162,372	7,405
Employed	154,294	153,822	136,124	18,170
Unemployed	15,483	17,049	26,248	-10,765
Unemployment Rate	9.1%	10.0%	16.2%	-7.1%

Texas Labor Force Statistics				
	Apr-21	Mar-21	Apr-20	Yearly Change
Civilian Labor Force	14,043,919	14,094,131	13,326,311	717,608
Employed	13,162,609	13,087,177	11,627,585	1,535,024
Unemployed	881,310	1,006,954	1,698,726	-817,416
Unemployment Rate	6.3%	7.1%	12.7%	-6.4%

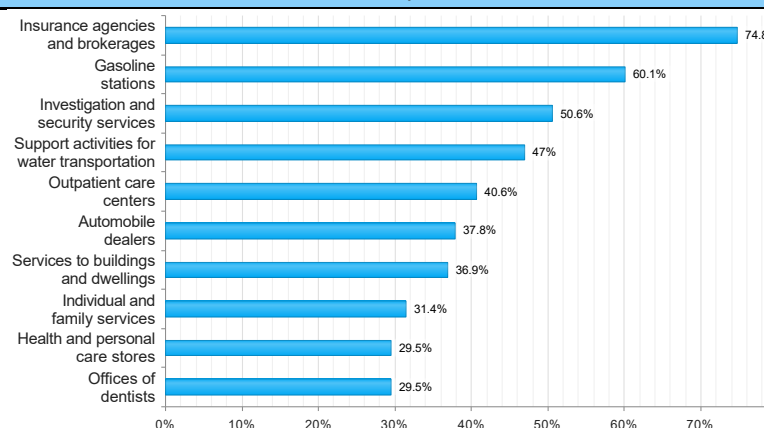
US Labor Force Statistics				
	Apr-21	Mar-21	Apr-20	Yearly Change
Civilian Labor Force	160,379,000	160,398,000	155,830,000	4,549,000
Employed	151,160,000	150,493,000	133,326,000	17,834,000
Unemployed	9,220,000	9,905,000	22,504,000	-13,284,000
Unemployment Rate	5.7%	6.2%	14.4%	-8.7%

Continued Claims for the Week of the 12th				
	Apr-21	Mar-21	Apr-20	Yearly Change
WDA	3,061	3,838	14,358	-11,297
Texas	163,934	210,643	960,717	-796,783

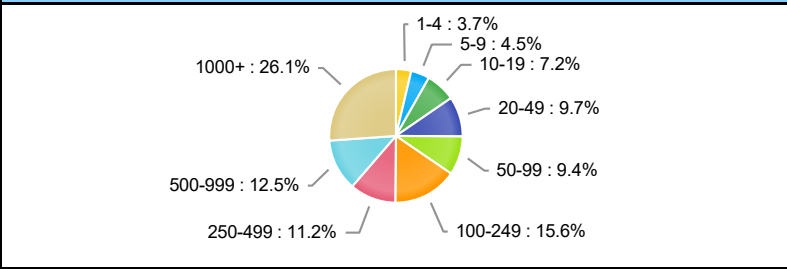
Historical Unemployment Rates



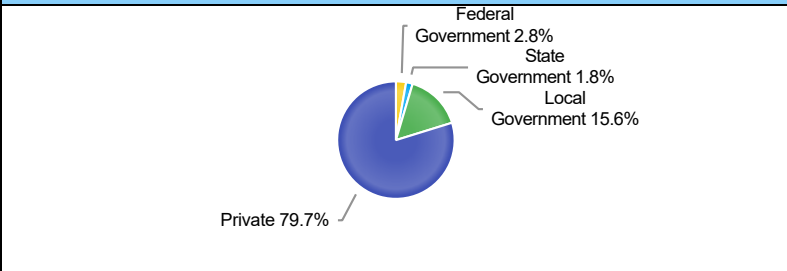
Projected Top Ten Fastest Growing Industries in WDA (% Growth 2018-2028)



Employment by Size Class (4th Quarter 2020)



Employment by Ownership (4th Quarter 2020)



Average Weekly Wage (4th Quarter 2020)

	Q4 2020	Q3 2020	Q4 2019	Quarterly Change	Yearly Change
WDA	\$761	\$696	\$702	\$65	\$59
Texas	\$1,294	\$1,150	\$1,187	\$144	\$107
US	\$1,339	\$1,173	\$1,185	\$166	\$154

Employment by Industry (4th Quarter 2020, Percent Change)

Industry	Employment	% of Total	% Quarterly Change	% Yearly Change
Natural Resources and Mining	563	0.4%	-10.8%	-13.0%
Construction	3,750	2.7%	4.6%	4.5%
Manufacturing	5,884	4.2%	1.8%	-3.7%
Trade, Transportation and Utilities	25,717	18.5%	5.1%	-2.4%
Information	529	0.4%	5.4%	-32.3%
Financial Activities	4,447	3.2%	-1.5%	-6.9%
Professional and Business Services	13,876	10.0%	12.9%	11.2%
Education and Health Services	59,197	42.5%	1.2%	-4.0%
Leisure and Hospitality	14,953	10.7%	3.9%	-7.8%
Other Services	2,372	1.7%	1.7%	-4.7%
Public Administration	8,007	5.7%	-2.4%	2.6%

Employment by Industry (4th Quarter 2020)

