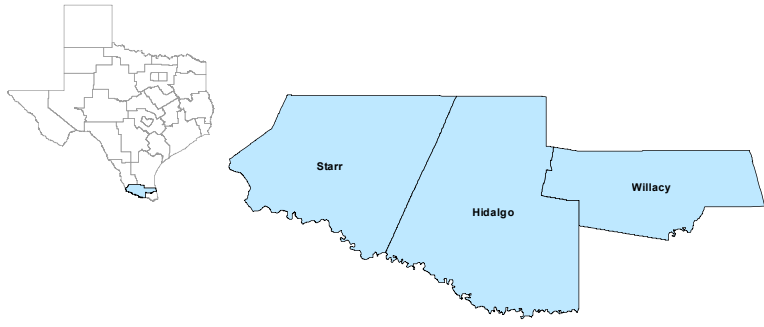


## Lower Rio Grande Workforce Development Area

April 2021



WDA Labor Force Statistics				
	Apr-21	Mar-21	Apr-20	Yearly Change
Civilian Labor Force	397,616	399,020	380,308	17,308
Employed	354,434	352,580	312,825	41,609
Unemployed	43,182	46,440	67,483	-24,301
Unemployment Rate	10.9%	11.6%	17.7%	-6.8%

Texas Labor Force Statistics				
	Apr-21	Mar-21	Apr-20	Yearly Change
Civilian Labor Force	14,043,919	14,094,131	13,326,311	717,608
Employed	13,162,609	13,087,177	11,627,585	1,535,024
Unemployed	881,310	1,006,954	1,698,726	-817,416
Unemployment Rate	6.3%	7.1%	12.7%	-6.4%

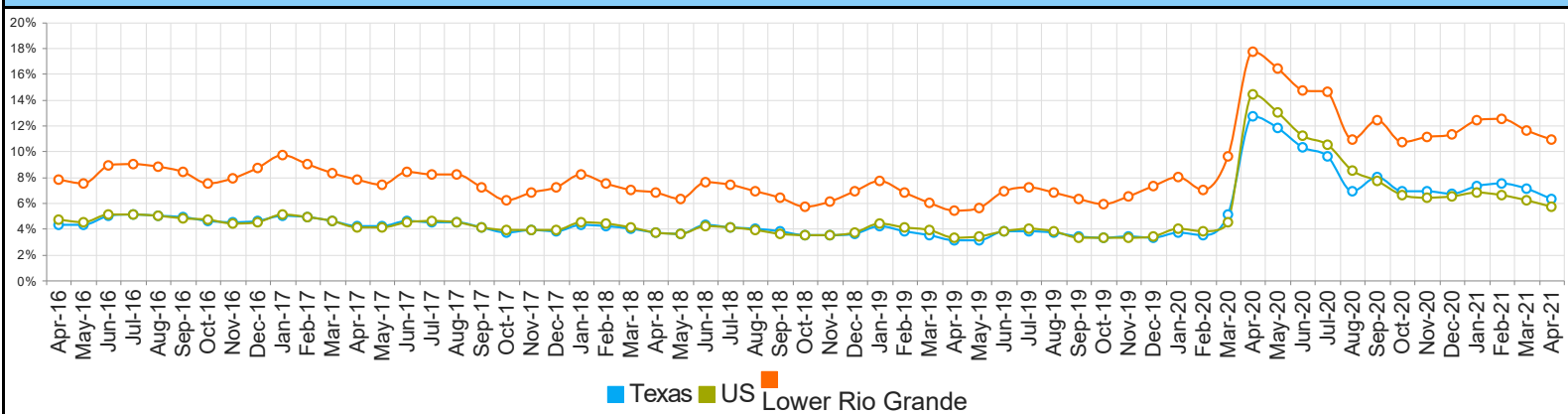
  

US Labor Force Statistics				
	Apr-21	Mar-21	Apr-20	Yearly Change
Civilian Labor Force	160,379,000	160,398,000	155,830,000	4,549,000
Employed	151,160,000	150,493,000	133,326,000	17,834,000
Unemployed	9,220,000	9,905,000	22,504,000	-13,284,000
Unemployment Rate	5.7%	6.2%	14.4%	-8.7%

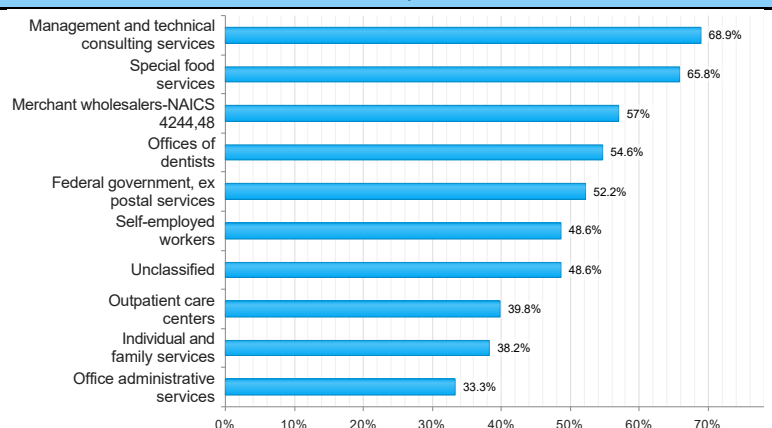
  

Continued Claims for the Week of the 12th				
	Apr-21	Mar-21	Apr-20	Yearly Change
WDA	9,472	11,240	36,455	-26,983
Texas	163,934	210,643	960,717	-796,783

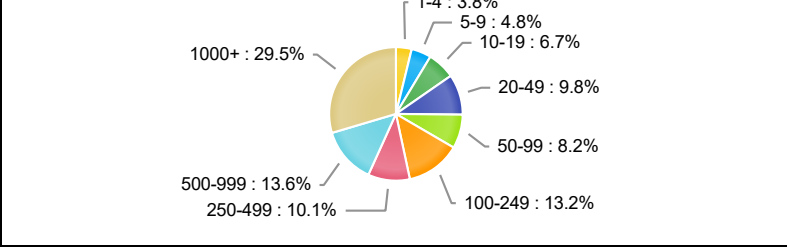
## Historical Unemployment Rates



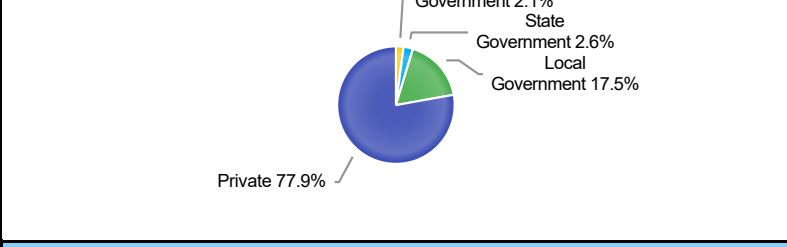
## Projected Top Ten Fastest Growing Industries in WDA (% Growth 2018-2028)



## Employment by Size Class (4th Quarter 2020)



## Employment by Ownership (4th Quarter 2020)



Average Weekly Wage (4th Quarter 2020)					
	Q4 2020	Q3 2020	Q4 2019	Quarterly Change	Yearly Change
WDA	\$774	\$711	\$702	\$63	\$72
Texas	\$1,294	\$1,150	\$1,187	\$144	\$107
US	\$1,339	\$1,173	\$1,185	\$166	\$154

## Employment by Industry (4th Quarter 2020, Percent Change)

Industry	Employment	% of Total	% Quarterly Change	% Yearly Change
Natural Resources and Mining	3,745	1.4%	16.4%	-18.2%
Construction	8,090	2.9%	5.3%	-2.5%
Manufacturing	7,061	2.6%	7.7%	-4.0%
Trade, Transportation and Utilities	56,613	20.5%	4.6%	-3.4%
Information	2,890	1.0%	0.3%	-10.9%
Financial Activities	8,993	3.3%	0.6%	-2.7%
Professional and Business Services	18,994	6.9%	3.4%	7.4%
Education and Health Services	125,304	45.3%	1.4%	-4.7%
Leisure and Hospitality	25,330	9.2%	6.2%	-13.1%
Other Services	4,239	1.5%	5.0%	-7.8%
Public Administration	15,175	5.5%	-3.5%	-3.0%

## Employment by Industry (4th Quarter 2020)

